

BILSTEIN®

SN2 | SNS2 Series



BILSTEIN SN2 | SNS2 Series.

Refined performance.

Designed for applications requiring steel body shocks, the all new BILSTEIN SN2 | SNS2 Series features optimized shock lengths, and a modular monotube design that enables the flexibility to revalve and rebuild as needed. End caps are available in aluminum (SN2 Series) or steel (SNS2 Series) to meet various sanctioning body requirements.

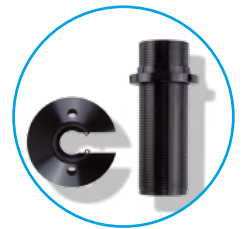
Features & benefits:

- 46mm extruded modular steel body maintains tighter tolerances for superior performance
- BILSTEIN's fill tool allows plug installation for sanctioning body requirements that restrict schrader valves (*fill tool sold separately; B4-BOA-0001227*)
- Body design allows for standard or coilover applications (*coilover kit sold separately; B4-BOA-0000117*)
- 14mm hard chromed shaft reduces seal drag and breakaway stiction
- Single and double adjustable shaft options available
- Linear or digressive pistons available for valving versatility
- Monotube design provides maximum heat dissipation

Fill tool:
B4-BOA-0001227



Coilover kit:
B4-BOA-0000117



1 Adjustment Options

Available with non, single, and double adjustable shafts.



APPLICATIONS.

**BILSTEIN
SN2 SERIES.**

Part #	Description	Mfg. #	Col.	Ext.
SN2-D50N0	SN2, 5", Digressive, non-adj	33-247779	11.0"	15.8"
SN2-D60N0	SN2, 6", Digressive, non-adj	33-247762	12.0"	17.8"
SN2-D70N0	SN2, 7", Digressive, non-adj	33-247755	13.0"	19.8"
SN2-D80N0	SN2, 8", Digressive., non-adj	33-247748	14.0"	21.8"
SN2-D90N0	SN2, 9", Digressive, non-adj	33-247731	15.1"	23.9"
SN2-L50N0	SN2, 5", Linear, non-adj	33-247823	11.0"	15.8"
SN2-L60N0	SN2, 6", Linear, non-adj	33-247816	12.0"	17.8"
SN2-L70N0	SN2, 7", Linear, non-adj	33-247809	13.0"	19.8"
SN2-L80N0	SN2, 8", Linear, non-adj	33-247793	14.0"	21.8"
SN2-L90N0	SN2, 9", Linear, non-adj	33-247786	15.1"	23.9"

**BILSTEIN
SNS2 SERIES.**

Part #	Description	Mfg. #	Col.	Ext.
SNS2-D50N0	SNS2, 5", Digressive, non-adj	33-260105	11.0"	15.8"
SNS2-D60N0	SNS2, 6", Digressive, non-adj	33-260112	12.0"	17.8"
SNS2-D70N0	SNS2, 7", Digressive, non-adj	33-260129	13.0"	19.8"
SNS2-D80N0	SNS2, 8", Digressive, non-adj	33-260136	14.0"	21.8"
SNS2-D90N0	SNS2, 9", Digressive, non-adj	33-260143	15.1"	23.9"
SNS2-L50N0	SNS2, 5", Linear, non-adj	33-260044	11.0"	15.8"
SNS2-L60N0	SNS2, 6", Linear, non-adj	33-260051	12.0"	17.8"
SNS2-L70N0	SNS2, 7", Linear, non-adj	33-260068	13.0"	19.8"
SNS2-L80N0	SNS2, 8", Linear, non-adj	33-260075	14.0"	21.8"
SNS2-L90N0	SNS2, 9", Linear, non-adj	33-260082	15.1"	23.9"

Common Components

Part #	Description	Part #	Description
E4-KS2-Z060A49	Shaft: 14mm x 158mm (5")	E4-R03-Z116A00	Tube: Steel SN2/SNS2 Series 46mm (5")
E4-KS2-Z060A50	Shaft: 14mm x 183mm (6")	E4-R03-Z116A01	Tube: Steel SN2/SNS2 Series 46mm (6")
E4-KS2-Z060A51	Shaft: 14mm x 208.5mm (7")	E4-R03-Z116A02	Tube: Steel SN2/SNS2 Series 46mm (7")
E4-KS2-Z060A52	Shaft: 14mm x 233mm (8")	E4-R03-Z116A03	Tube: Steel SN2/SNS2 Series 46mm (8")
E4-KS2-Z060A53	(9") Shaft: 14mm x 258.5mm (9")	E4-R03-Z116A04	Tube: Steel SN2/SNS2 Series 46mm (9")
E4-LG0-Z016A00	End Cap: AS2/SN2 Series Aluminum	B4-B46-U160	Dividing Piston: 46mm Aluminum
E4-LG0-Z016A03	End Cap: SNS2 Series Steel	B4-LG0-Z043A01	Rod End Assembly: Machined Finish w/ 1/2" Heim
E4-DI6-Z109A00	O-Ring: AS2/SN2 End Cap Seal	E4-GL1-Z020A00	Bearing: 1/2" Graphite Heim (Black)
B4-XD0-Z015A00	Filling Valve Assembly, M8X1 (SN2 Only)	E4-BOA-0000440	Snap Ring: 26mm
E4-DI6-Z110A00	O-Ring: Filling Valve Seal 1.2x6mm ID (SN2)	B4-BOA-0000119	Rod Guide: 14mmx46mm Take Apart
B4-XD0-Z006A01	Schrader Valve Assembly (SNS2 Only)	E4-B46-26	Snap Ring: 46mm Internal
E4-SB3-Z004A02	Bump Cap: Shock Seal	E4-MU1-Z010A00	Nut: M12x1 Locknut
E4-DI1-Z002A00	Wiper: Shock Seal 14mm Wiper	2522880	Snap Ring: SW 50 46mm External
E4-KR2-X001A02	Wear Band: 46mm Unrolled Piston Band	E4-XD0-Z048A00	Plug 1/8" NPT w/ 3/16" Allen Hex (SNS2)
E4-AK1-Z033A00	Piston: 8mm ID, 46mm Digressive (COB)	2568310	O-ring: 12.07mmx5.33mm Travel Indicator
E4-B46-20SNCT	Piston: 8mm ID, 46mm Linear	B4-BOA-0000117	Coilover Kit: 46mm Slide-On (For 2.5" Spring)
E4-AP1-Z023A03	Rebound Stop Blue	B4-BOA-0001227	Fill tool assembly: Plug Installation (SNS2)

